



Treatment for wastewater



Results of dark water treatments



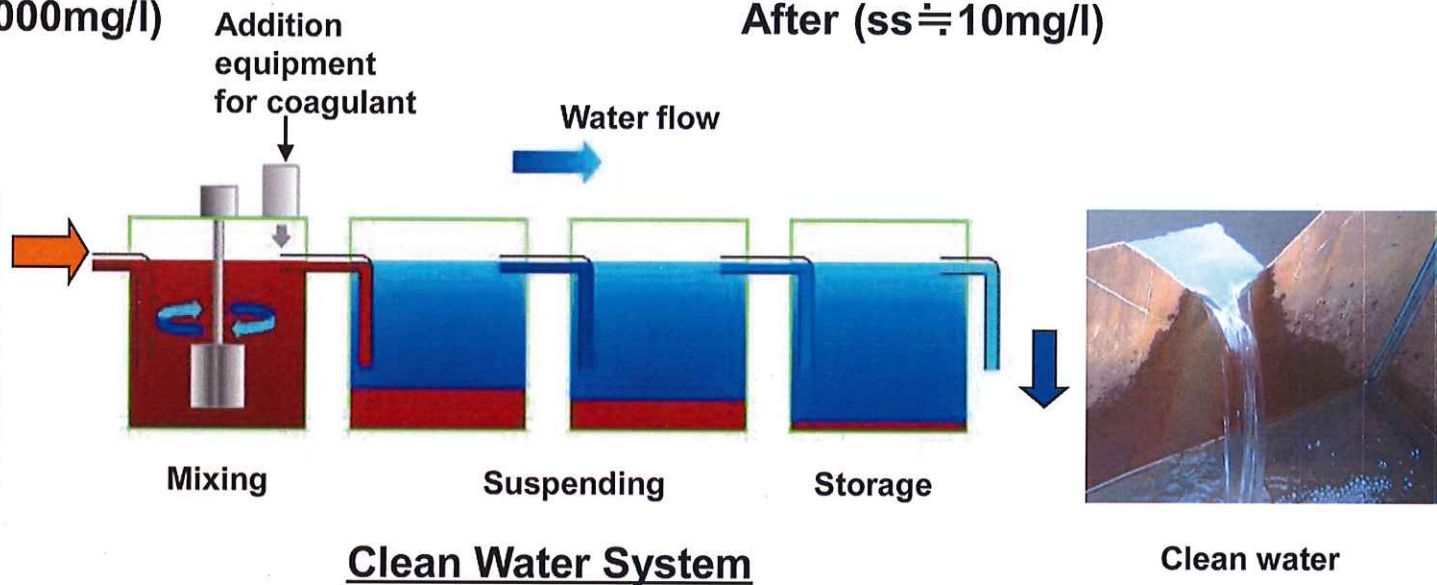
Before (ss \approx 3000mg/l)



After (ss \approx 10mg/l)



Dark water

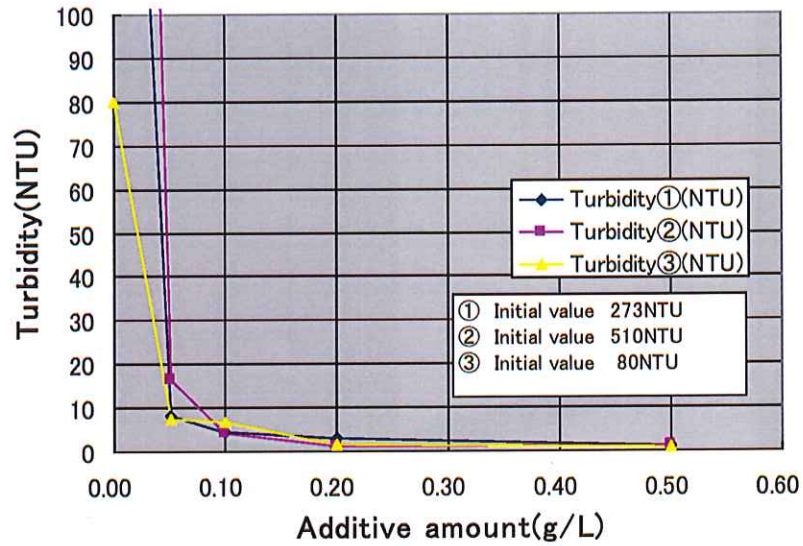


Clean Water System

Clean water

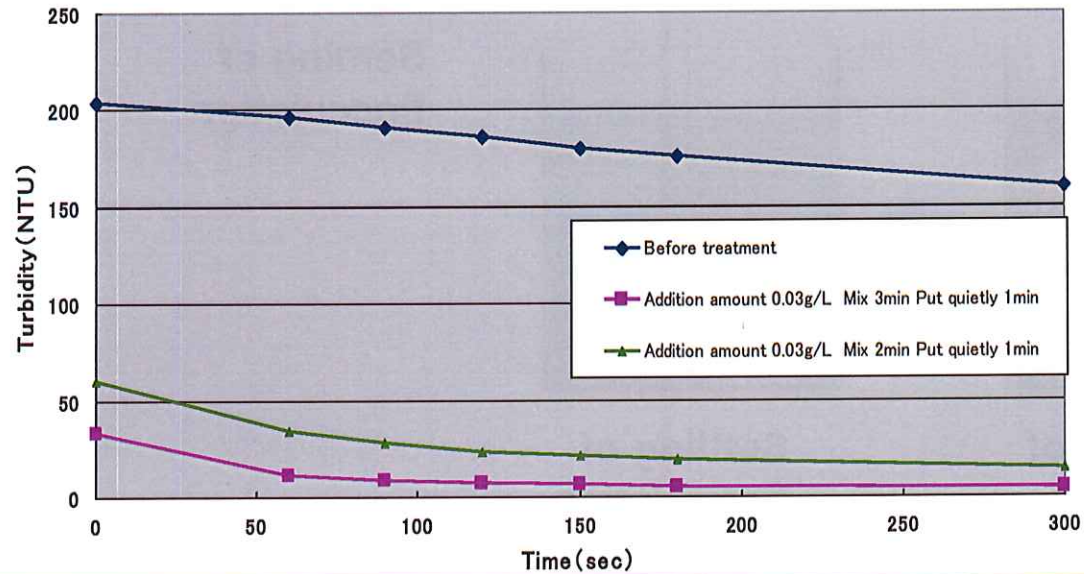
Purge ability of the coagulant

Detail of Additive amount & Turbidity



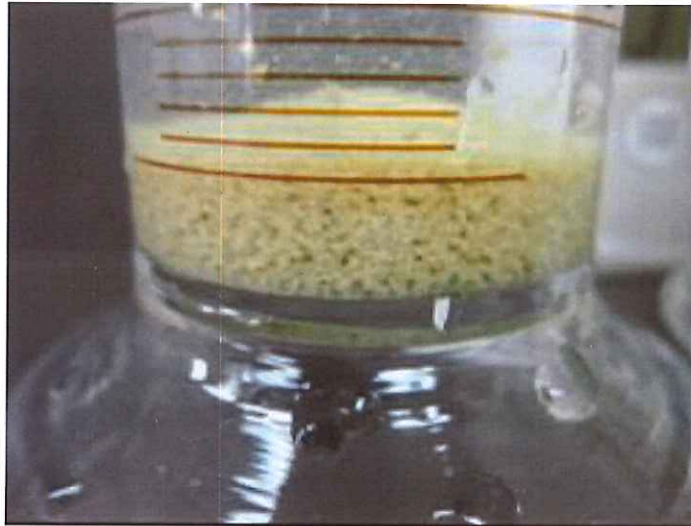
Coagulant [AMARA]

Relation between the turbidity and precipitate time



Before and after

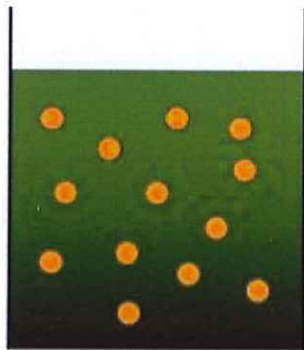
Principle of flocculation



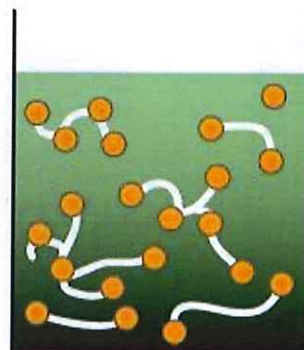
Detail



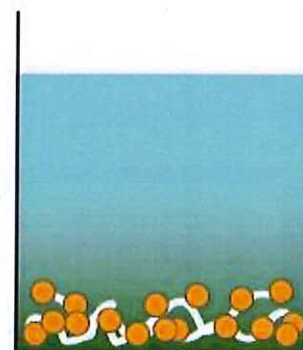
Settling of flocculation



Dark water



Formation of flocculation

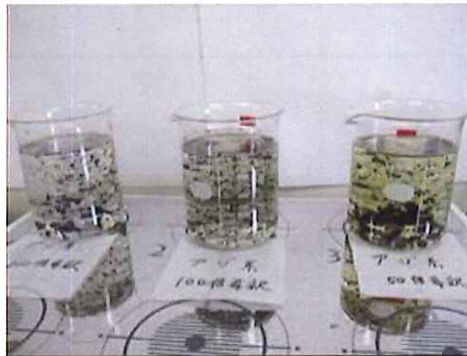


Settling of flocculation

Treatment for dyeing waste water



Dyeing water



After the additional coagulant



Waste Water Treatment System



Before waste water



Treatment water

Treatment for enameled factory' s waste water



For the effective functionality, the details of every polluted water are required.

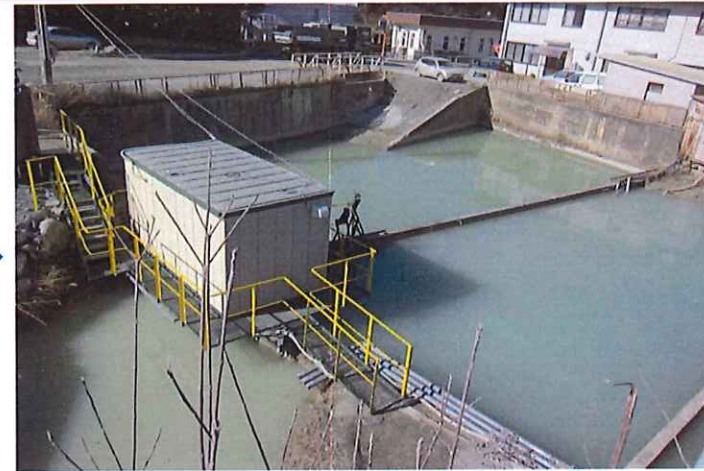
Abilty: 10m³/hr(max)

Target: boron(<10mg/L),fluorine(<8mg/L)

Effect for turbid water treatment system



Turbidity(400NTU) before treatment



Turbidity(<20NTU) after treatment



Waterway situation before treatment



Waterway situation after treatment

Discharge Toyokawa after treatment

Water for lives(1)



Toul tachan village in Cambodia

Neighboring well in Cambodia

Quality water test for Arsenic

ប៉ារ៉ាម៉ែត្រ Parameter	ឯកតា Unit	លទ្ធផល Result	ស្ថានីយ៍ Toul Tachan
Arsenic (As)	mg/l	0.103	0.108

យកសំណាក តាមក្បាច់ និងការដឹកជញ្ជូនសំណាកទឹកមកមន្ទីរពិសោធន៍(គំរោង) ក្រុមហ៊ុនអនុវត្តដោយខ្លួនឯង ។

Results of quality water test for Arsenic

Analycis agency	Density of arsnic (mg/l)	Note
Ministry of the Environment (Kingdom of Cambodia)	0.103	APHA Method 3500-As
Incorporated foundation (Japan)	0.005 0.006	JIS K0102.61.4

Guideline of elution amount of the arsenic

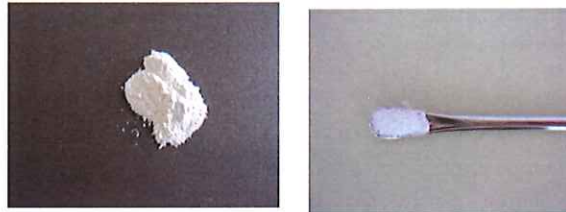
Cambodia	0.05mg/l
USEPA	0.05mg/l
WHO	0.01mg/l
Japan	0.01mg/l

Water for lives(2) in Japan

Secure of the water in case of emergency



Water from pool



Purification agent for lives [MALIS]



Newspaper article

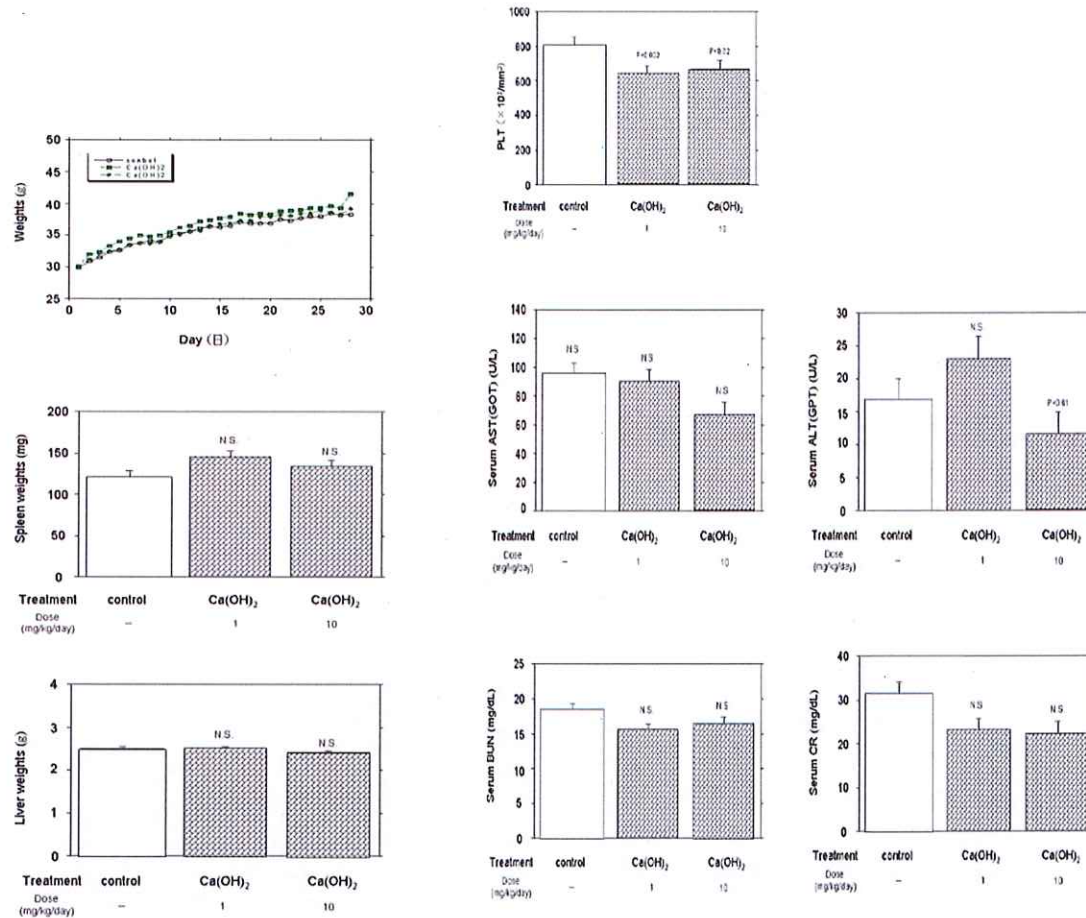


Demonstration by the Red Cross



Sub acute toxicity test by mouse

Safety demonstration for Emergency water purification agent "MALIS"



Weights-Day

GOT & GPT etc.

Judgments : Regarding emergency water purification agent "MALIS", the assessment was done on the whole body, the blood cell, the immunity and the spleen of mice.

As a result, even though these values slightly fluctuate within the normal range, emergency water purification agent "Malis" was judged that there is no sub acute toxicity by 28days dosing.

Test Laboratory : An incorporated foundation Ishikawa prefectural Institute of Preventive Medicine

Others



water-bloom [Green laver]



[Wine]



[Raw milk)]



[Raw of the Palm oil]



[Step 1 : Palm oil]



[Step 2 : Palm oil]

List of achievements

Construction	Area	Contaminants	Countermeasures
Land formation work for University	Ishikawa	Turbid water treatment from job site	Plant system
Base of the bridge	Aichi	Turbid water treatment from job site	Plant system
Tunnel	Iwate	Waste water after washing the ready mixed concrete	Sale of coagulant
Dam	Yamaguchi	Turbid water treatment from job site	Sale of coagulant
Park	Myanmar	Treatment for water-bloom [green laver]	Sale of coagulant
Enameled factory	Aichi	Treatment for waste water from factory	Plant system